



# ESSMUELLER

## DRAG-FLITE CONVEYORS

Model "RB"

Eight sizes—6" thru 24"

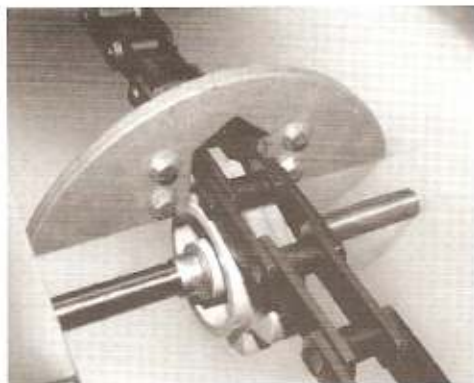
Capacities thru 20,000 BPH



NOTE: Cover must be on during operation.  
Cover removed in photo to show  
construction details.

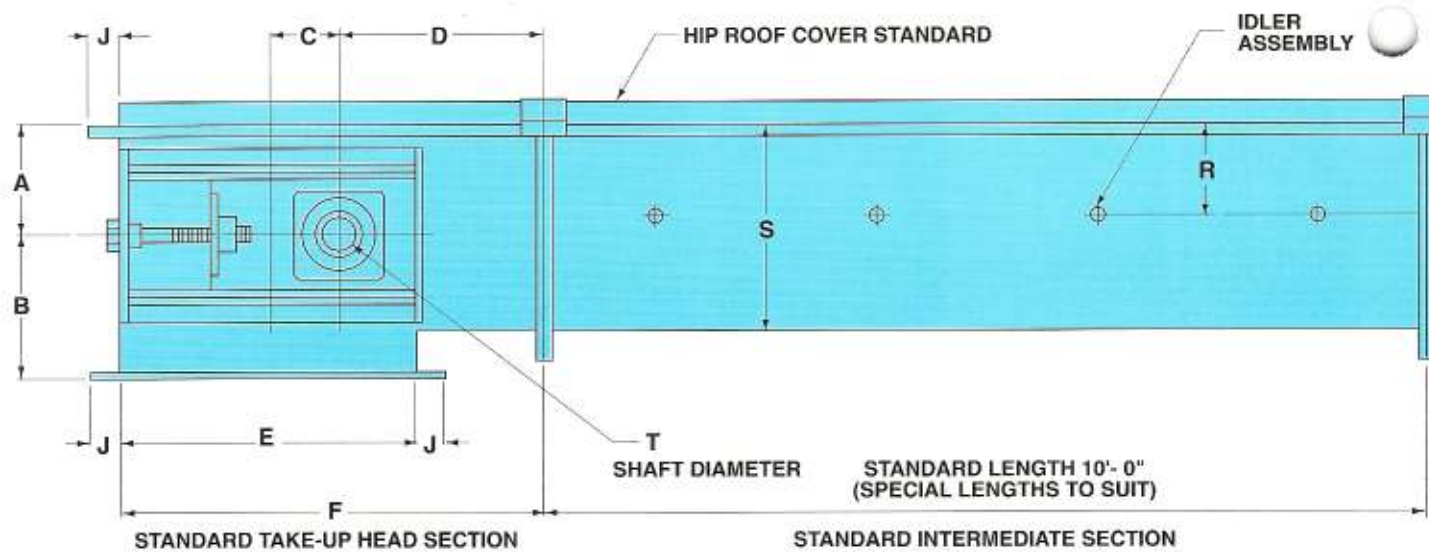
### SPROCKET IDLER RETURN SYSTEM

... an Essmuller first!!



Originally introduced by Essmuller more than 10  
years ago. Permits faster operating speeds, smoother  
delivery of products. Prolongs parts life by reducing  
friction to a minimum.

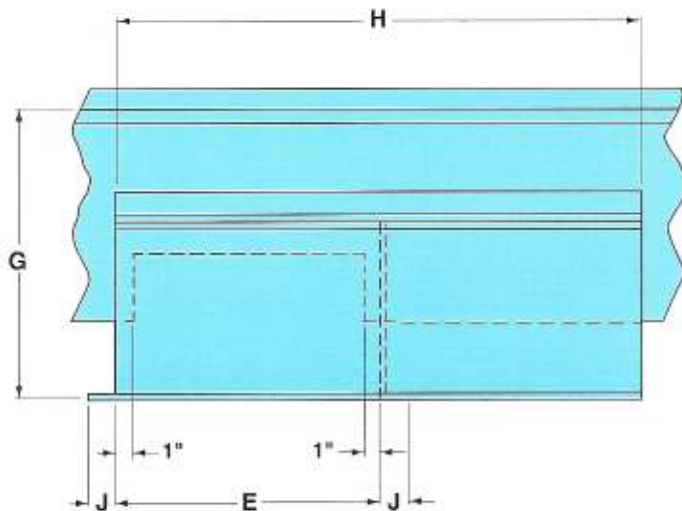
# ESSMUELLER DRAG-FLITE STANDARDS



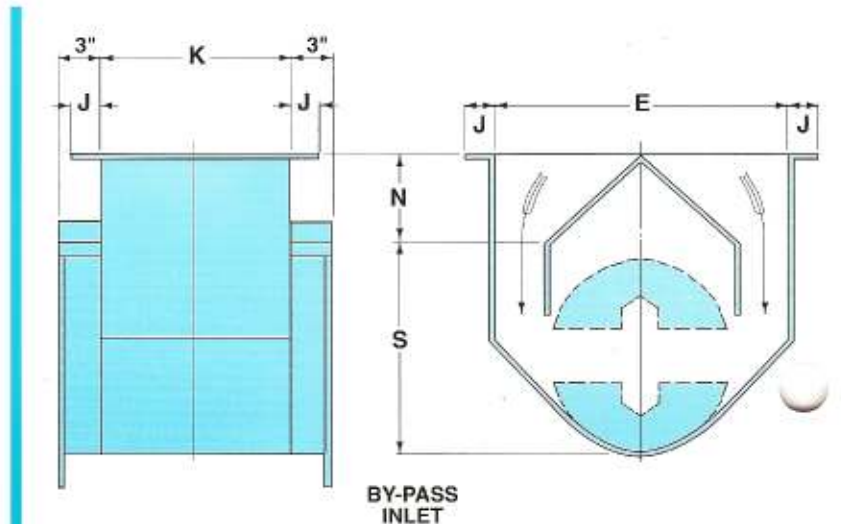
## MODEL RB

SIZE	A	B	C	D	E	F	G	H	J	K
6	4 $\frac{1}{4}$	5 $\frac{3}{4}$	3 $\frac{3}{4}$	7 $\frac{1}{4}$	13	18	12 $\frac{1}{2}$	29	1 $\frac{5}{16}$	7
9	5 $\frac{9}{16}$	8 $\frac{5}{16}$	4 $\frac{1}{2}$	13 $\frac{3}{8}$	16	26	16 $\frac{3}{8}$	35	1 $\frac{5}{8}$	10
12	7 $\frac{3}{8}$	10	4 $\frac{1}{2}$	14 $\frac{1}{4}$	20	29	19 $\frac{3}{4}$	43	2 $\frac{1}{8}$	13
14	8 $\frac{5}{8}$	11 $\frac{1}{2}$	4 $\frac{1}{2}$	15 $\frac{1}{4}$	23	30	22 $\frac{1}{4}$	49	2 $\frac{1}{8}$	15
16	9 $\frac{7}{8}$	12 $\frac{5}{8}$	6	14 $\frac{3}{4}$	26	33	24 $\frac{5}{8}$	55	2 $\frac{1}{8}$	17
18	11 $\frac{1}{8}$	14 $\frac{3}{8}$	6	19 $\frac{5}{8}$	29	39	27 $\frac{3}{8}$	60	2 $\frac{5}{8}$	19
20	12 $\frac{3}{8}$	16 $\frac{1}{8}$	6	20 $\frac{5}{8}$	32	40	29 $\frac{1}{2}$	67	2 $\frac{5}{8}$	21
24	15 $\frac{1}{4}$	19 $\frac{3}{8}$	6	22 $\frac{1}{2}$	38	45	34 $\frac{1}{2}$	79	2 $\frac{5}{8}$	25

## DIMENSIONS OF POPULAR OPTIONS

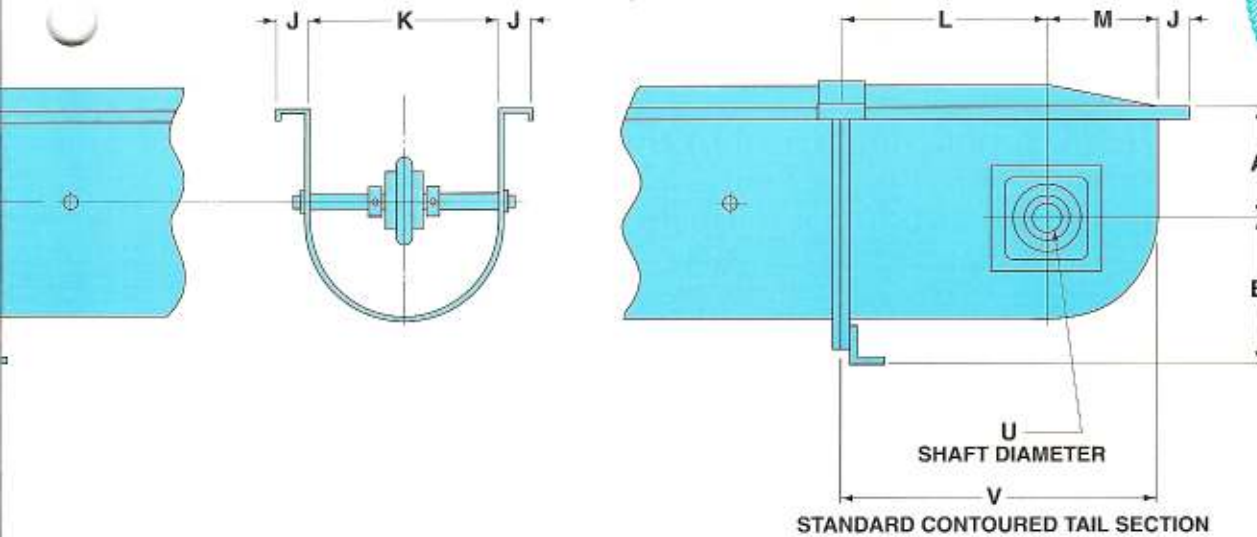


INTERMEDIATE CURVED SLIDE DISCHARGE GATE OPERATED BY HANDWHEEL, CHAIN WHEEL, AIR CYLINDER OR ELECTRIC MOTOR.



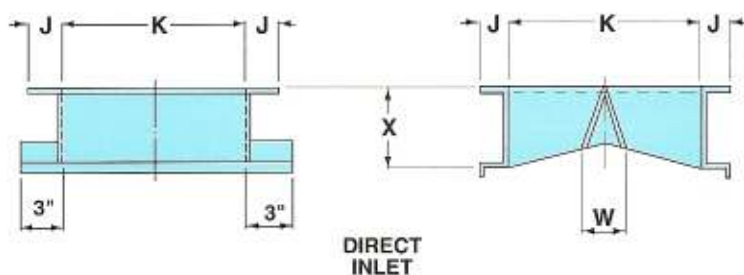
BY-PASS INLET

# BARD CONVEYOR DIMENSIONS

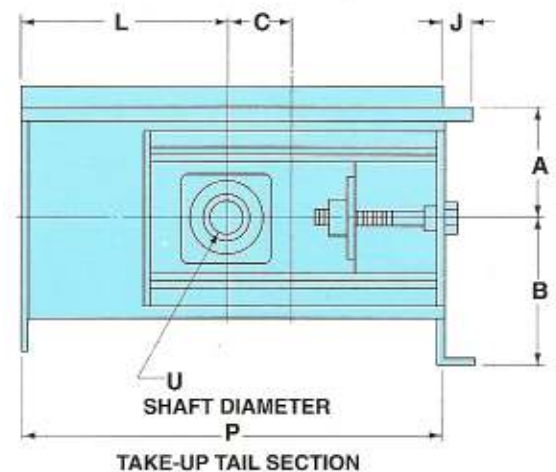


L	M	N	P	R	S	T	U	V	W	X
9	4	3	20	3¼	8	1 <sup>3</sup> / <sub>16</sub>	1 <sup>3</sup> / <sub>16</sub>	13	1 <sup>3</sup> / <sub>8</sub>	3
12	6	5	24	4 <sup>7</sup> / <sub>8</sub>	11 <sup>1</sup> / <sub>8</sub>	1 <sup>15</sup> / <sub>16</sub>	1 <sup>7</sup> / <sub>16</sub>	18	2 <sup>3</sup> / <sub>16</sub>	3
17	7½	6	31	6¼	14¼	2 <sup>3</sup> / <sub>16</sub>	1 <sup>15</sup> / <sub>16</sub>	24½	3	4
17	9	7	32	7	16¼	2 <sup>3</sup> / <sub>16</sub>	1 <sup>15</sup> / <sub>16</sub>	26	3	4
18	10	8	37	7 <sup>5</sup> / <sub>8</sub>	19 <sup>1</sup> / <sub>8</sub>	2 <sup>7</sup> / <sub>16</sub>	2 <sup>3</sup> / <sub>16</sub>	28	3	4
18	11	9	38	9¼	21 <sup>5</sup> / <sub>8</sub>	2 <sup>15</sup> / <sub>16</sub>	2 <sup>7</sup> / <sub>16</sub>	29	4	6
18	12½	10	38	10½	24	2 <sup>15</sup> / <sub>16</sub>	2 <sup>7</sup> / <sub>16</sub>	30½	4	6
22	14½	12	42	11	29	2 <sup>15</sup> / <sub>16</sub>	2 <sup>7</sup> / <sub>16</sub>	36½	4	6

NOTE: DIMENSIONS SUBJECT TO CHANGE WITHOUT NOTICE



DIRECT INLET



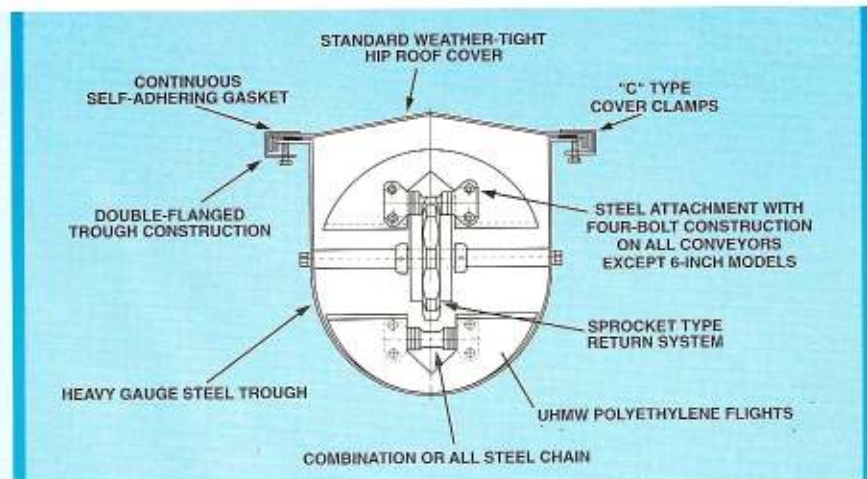
TAKE-UP TAIL SECTION

## CAPACITIES:

SIZE	100 F.P.M.		125 F.P.M.		150 F.P.M.		175 F.P.M.	
	B.P.H.	C.F.H.	B.P.H.	C.F.H.	B.P.H.	C.F.H.	B.P.H.	C.F.H.
6	800	1000	1000	1250	1200	1500	1400	1750
9	1500	1875	1875	2343	2250	2812	2625	3281
12	2500	3125	3125	3906	3750	4687	4375	5468
14	3500	4375	4375	5468	5250	6562	6125	7656
16	4500	5625	5625	7031	6750	8437	7875	9843
18	5800	7250	7250	9062	8700	10875	10150	12687
20	7000	8750	8750	10937	10500	13125	12250	15312
24	11800	14750	14750	18437	17700	22125	20650	25812

These capacities are based on 100% loading with free-flowing grain at 48 pounds per cubic foot and should be used for horizontal choke load applications. Selection of conveyors fed by controlled flow should be based on 90% of these capacities. Capacities and speeds will vary with other materials and for inclined units. Consult Essmuller for all such applications. **NOTE: Construction features and specifications subject to change without notice.**

## STANDARD FEATURES



Extra-tough UHMW (ultra-high molecular weight) polyethylene flights are contoured to trough bottom to produce self-cleaning action. Four-bolt construction on all units except 6-inch conveyors securely attaches flights, helps resist flight distortion and breakage to assure longer, uninterrupted operation.

Standard hip roof cover prevents intrusion by moisture contaminants. One-piece, double-flanged trough construction increases strength and rigidity while avoiding rust pockets. Self-adhering gasket between trough and cover seals out moisture, dust and dirt. "C" type cover clamps permit easy access to conveyor for maintenance or inspection.

## POPULAR OPTIONS:

- BY-PASS INLETS ■ END RELIEF DOORS ■ INSPECTION DOORS
- DIRECT INLETS ■ ABRASION-RESISTANT LINERS ■ BEND SECTIONS
- REVERSING FEATURE ■ SLACK CHAIN DETECTORS ■ INTERMEDIATE DISCHARGE GATES
- THRU BY-PASS INLETS ■ PAN FEEDERS INLETS ■ TAKE-UP TAIL SECTION
- FLARED BY-PASS INLET



## THE ESSMUELLER COMPANY

P.O. Box 1966, LAUREL, MISSISSIPPI 39441-1966  
 PHONE: 1-800-325-7175 OR 1-601-649-2400  
 FAX: 1-601-649-4320  
[www.essmuller.com](http://www.essmuller.com)