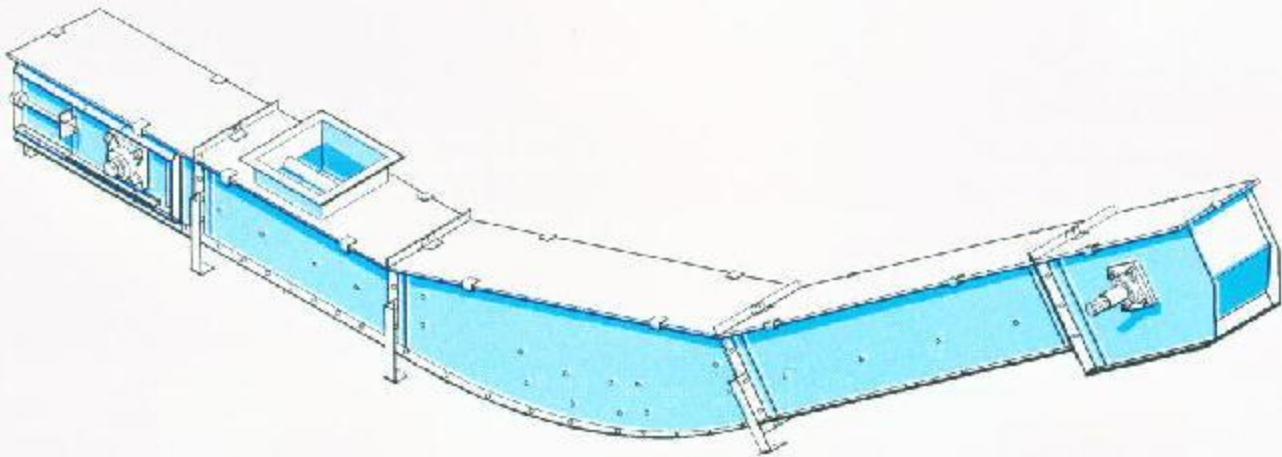




CATALOG HF100

ESSMUELLER

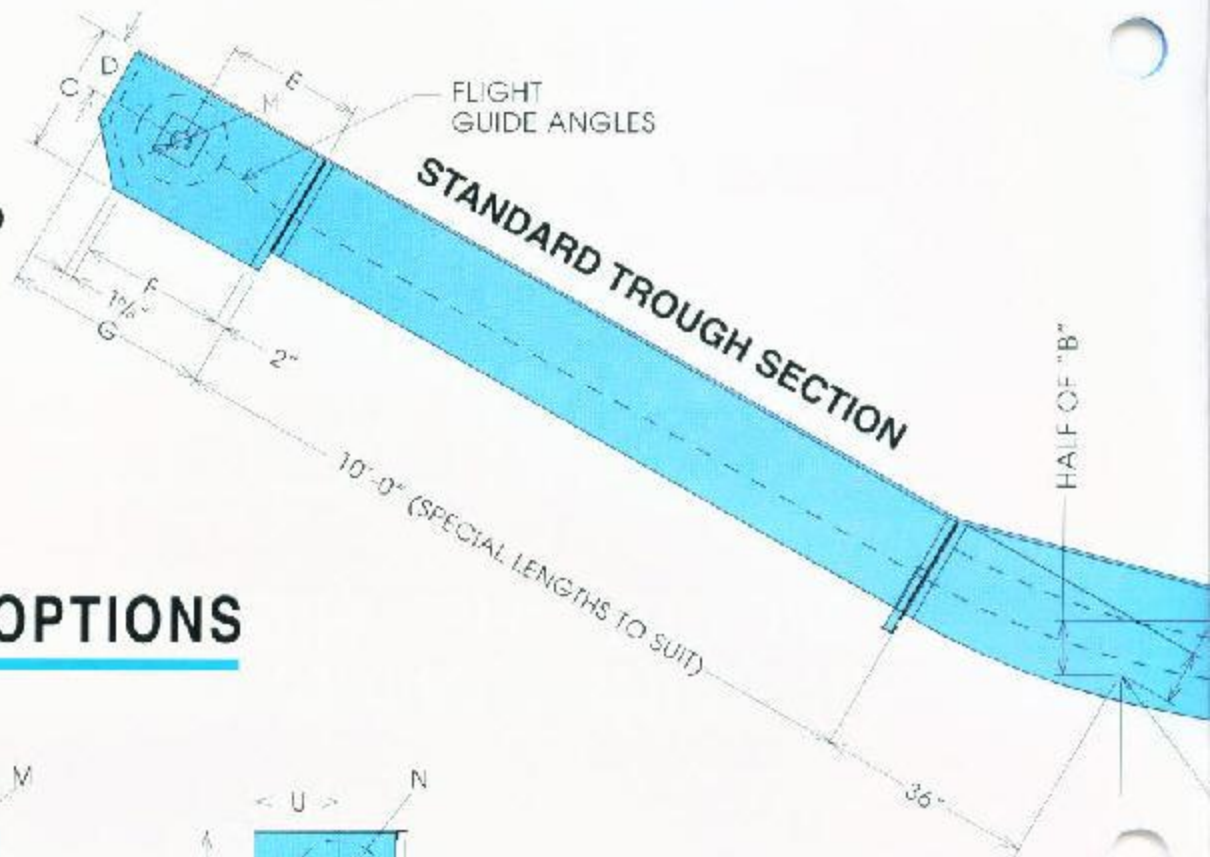
MODEL "HF" HIGH-FLITE
INCLINE CONVEYOR



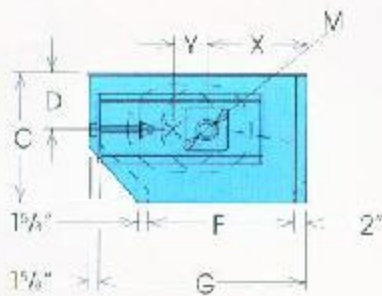
Sizes to 18,500 BPH at inclines up to 45°

ESSMUELLER HIGH-FLITE CONVEYOR

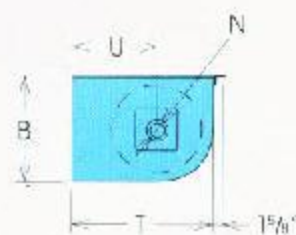
STANDARD HEAD SECTION



POPULAR OPTIONS

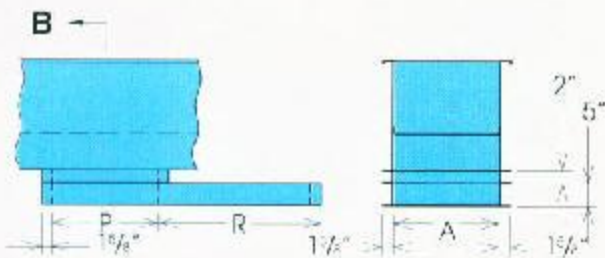


TAKE-UP HEAD SECTION



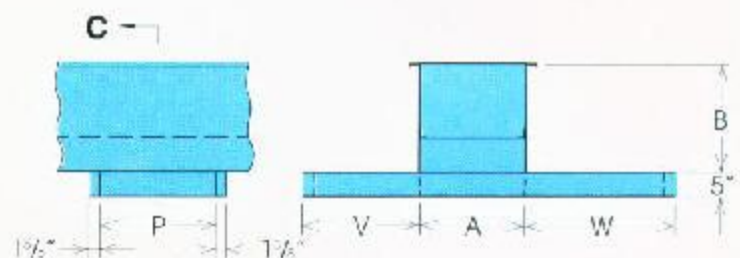
CONTOURED TAIL SECTION

BEND SECTION (45° MAX.)



B - SECTION B-B

STUB DISCHARGE WITH IN-LINE GATE



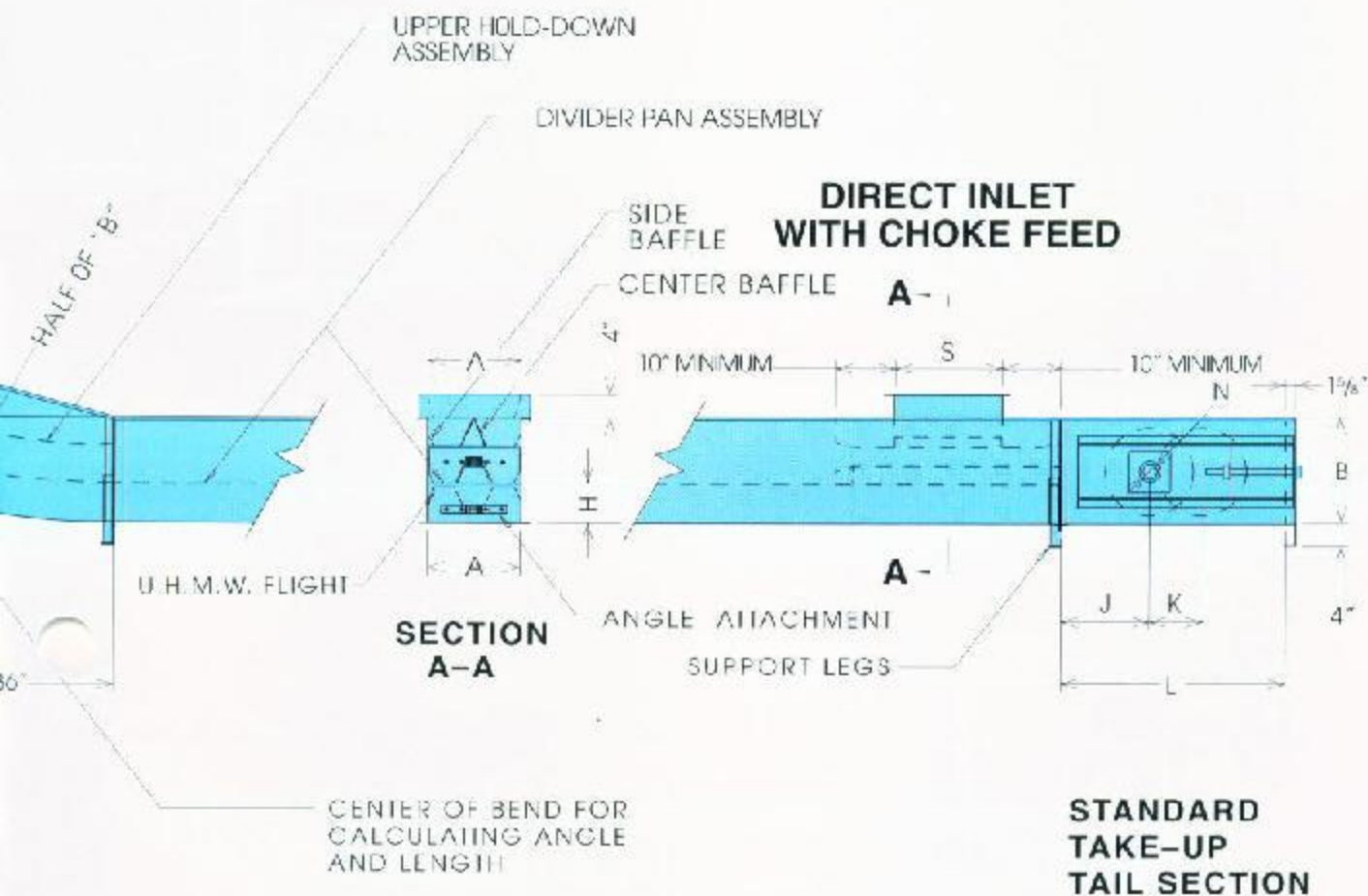
C - SECTION C-C

SELF-CLEANING CROSS GATE

OPTIONS: HAND WHEEL, CHAIN WHEEL, PNEUMATIC OR ELECTRIC DRIVES (NOT SHOWN).

DIMENSIONS

DESIGNED ESPECIALLY
FOR INCLINED APPLICATIONS



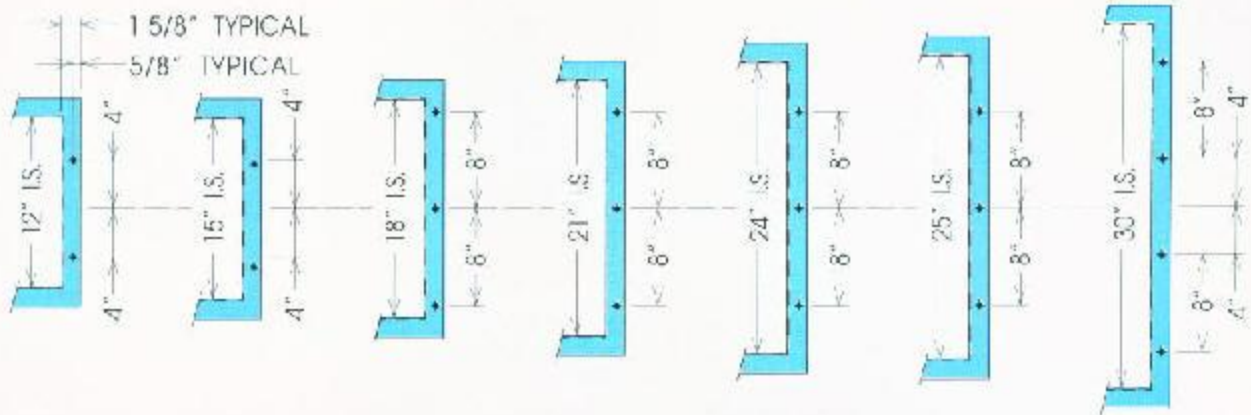
**STANDARD
TAKE-UP
TAIL SECTION**

MODEL "HF" DIMENSIONAL DATA Note: Material Fill Depth is $\frac{1}{8}$ " less than Dim. "H"

SIZE	A	B	C	D	E	F	G	H	J	K	L	M	N	P	R	S	T	U	V	W	X	Y
1213	12	13	17	6 $\frac{1}{8}$	20 $\frac{1}{2}$	24	31	4 $\frac{1}{8}$	12 $\frac{1}{2}$	4 $\frac{1}{2}$	28	2 $\frac{3}{16}$	2 $\frac{3}{16}$	30	41 $\frac{1}{16}$	12	20 $\frac{3}{8}$	14	18 $\frac{5}{8}$	27 $\frac{5}{8}$	16	4 $\frac{1}{2}$
1513	15	13	17	6 $\frac{1}{8}$	20 $\frac{1}{2}$	24	31	4 $\frac{1}{8}$	12 $\frac{1}{2}$	4 $\frac{1}{2}$	28	2 $\frac{3}{16}$	2 $\frac{3}{16}$	30	41 $\frac{1}{16}$	12	20 $\frac{3}{8}$	14	21 $\frac{1}{8}$	30 $\frac{1}{8}$	16	4 $\frac{1}{2}$
1218	12	18	22	9 $\frac{7}{16}$	22	24	34	6 $\frac{1}{8}$	15	9	38	2 $\frac{7}{16}$	2 $\frac{7}{16}$	36	47 $\frac{1}{16}$	18	23 $\frac{1}{4}$	14	18 $\frac{3}{8}$	27 $\frac{3}{8}$	16 $\frac{1}{2}$	5 $\frac{1}{2}$
1518	15	18	22	9 $\frac{7}{16}$	22	24	34	6 $\frac{1}{8}$	15	9	38	2 $\frac{7}{16}$	2 $\frac{7}{16}$	36	47 $\frac{1}{16}$	18	23 $\frac{1}{4}$	14	21 $\frac{3}{8}$	30 $\frac{3}{8}$	16 $\frac{1}{2}$	5 $\frac{1}{2}$
1818	18	18	22	9 $\frac{7}{16}$	22	24	34	6 $\frac{1}{8}$	15	9	38	2 $\frac{7}{16}$	2 $\frac{7}{16}$	36	47 $\frac{1}{16}$	18	23 $\frac{1}{4}$	14	24 $\frac{3}{8}$	33 $\frac{3}{8}$	16 $\frac{1}{2}$	5 $\frac{1}{2}$
2118	21	18	22	9 $\frac{7}{16}$	22	24	34	6 $\frac{1}{8}$	15	9	38	2 $\frac{7}{16}$	2 $\frac{7}{16}$	36	47 $\frac{1}{16}$	18	23 $\frac{1}{4}$	14	27 $\frac{3}{8}$	36 $\frac{3}{8}$	16 $\frac{1}{2}$	5 $\frac{1}{2}$
2418	24	18	22	9 $\frac{7}{16}$	22	24	34	6 $\frac{1}{8}$	15	9	38	2 $\frac{7}{16}$	2 $\frac{7}{16}$	36	47 $\frac{1}{16}$	18	36	14	30 $\frac{3}{8}$	39 $\frac{3}{8}$	16 $\frac{1}{2}$	5 $\frac{1}{2}$
2124	21	24	26	12 $\frac{3}{8}$	25	30	40	9 $\frac{1}{8}$	24	9	46 $\frac{1}{8}$	2 $\frac{1}{5}$	2 $\frac{1}{5}$	36	47 $\frac{1}{16}$	24	36	24	27 $\frac{3}{8}$	36 $\frac{3}{8}$	19 $\frac{1}{2}$	5 $\frac{1}{2}$
2424	24	24	28	12 $\frac{3}{8}$	25	30	40	9 $\frac{1}{8}$	24	9	46 $\frac{1}{8}$	2 $\frac{1}{5}$	2 $\frac{1}{5}$	36	47 $\frac{1}{16}$	24	36	24	30 $\frac{3}{8}$	39 $\frac{3}{8}$	19 $\frac{1}{2}$	5 $\frac{1}{2}$
3024	30	24	28	12 $\frac{3}{8}$	25	30	40	9 $\frac{1}{8}$	24	9	46 $\frac{1}{8}$	2 $\frac{1}{5}$	2 $\frac{1}{5}$	36	47 $\frac{1}{16}$	24	36	24	36 $\frac{3}{8}$	45 $\frac{3}{8}$	19 $\frac{1}{2}$	5 $\frac{1}{2}$

Note: Dimensions are subject to change without notice

MODEL "HF" STANDARD FLANGE PATTERNS



ALL HOLES 7/16" ϕ

MODEL "HF" CAPACITIES

FPM	100		125		150		175	
SIZE	BPH	CFH	BPH	CFH	BPH	CFH	BPH	CFH
1213	1500	1865	1875	2330	2250	2800	2625	3265
1513	2000	2485	2500	3110	3000	3730	3500	4355
1218	2300	2860	2875	3575	3450	4290	4025	5005
1518	2900	3605	3625	4510	4350	5410	5075	6315
1818	3500	4355	4375	5440	5250	6530	6125	7620
2118	4100	5100	5125	6375	6150	7650	7175	8925
2418	4700	5845	5875	7310	7050	8770	8225	10235
2124	6100	7590	7625	9485	9225	11480	10675	13285
2424	7000	8710	8750	10885	10500	13065	12250	15245
3024	8800	10950	11000	13685	13200	16425	15400	19165

Computed for free-flowing grain and similar materials.



THE ESSMUELLER COMPANY

P.O. Box 1966, 334 "A", Airbase
 Laurel, Mississippi 39441, USA
 Phone 601-649-2400, Toll Free 800-325-7175
 Fax 601-649-4320
 E-Mail essmuller@essmuller.com