

MODEL "HR" CAPACITIES *								
FPM	100		125		150		175	
SIZE	BPH	CFH	BPH	CFH	BPH	CFH	BPH	CFH
9	1500	1875	1875	2343	2250	2812	2625	3281
12	2500	3125	3125	3906	3750	4687	4375	5468
16	4500	5625	5625	7031	6750	8437	7875	9843

Computed for free-flowing grain and similar materials.
 * For larger capacities, contact Essmueller engineering.



ESSMUELLER

STANDARD FEATURES

10 GAUGE STEEL SELF-CLEANING TROUGH 10 GAUGE BOLTED INTERMEDIATE COVER
 10 GAUGE ABRASION RESISTANT DIVIDER PAN WEATHER-TIGHT DESIGN
 U.H.M.W. POLYETHYLENE FLIGHTS PILLOW BLOCK BEARINGS

POPULAR OPTIONS

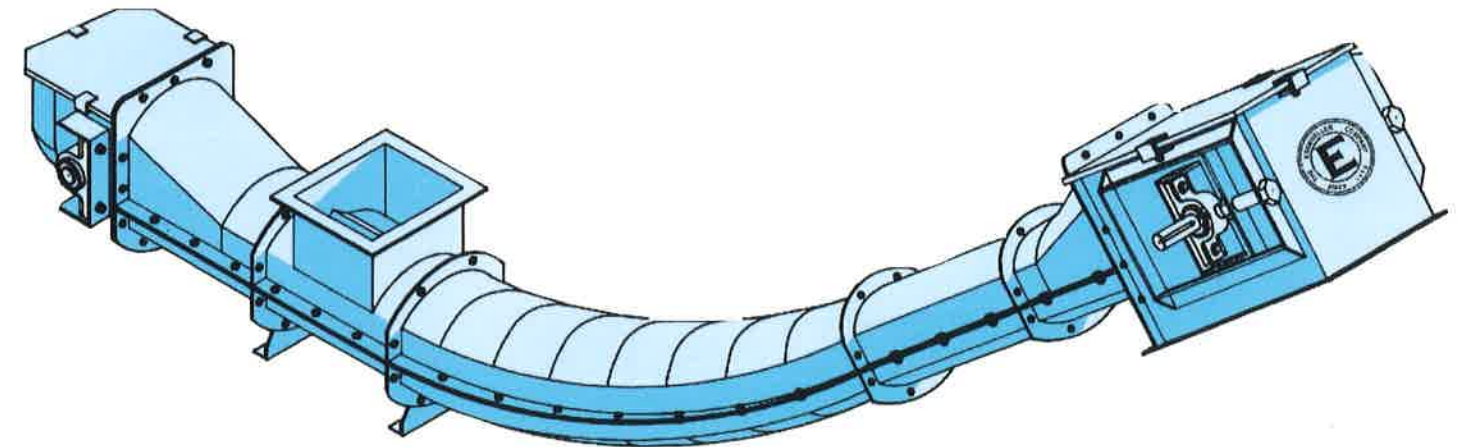
DIRECT INLET FOR CHOKE LOAD END RELIEF DOOR INSPECTION DOORS
 ABRASION RESISTANT LINERS BEND SECTIONS REVERSING BEND SECTIONS
 INTERMEDIATE CURVED DISCHARGE GATES STUB DISCHARGES



THE ESSMUELLER COMPANY

P.O. Box 1966, Laurel, Mississippi 39441-1961 USA
 PHONE: Toll-Free 1-800-325-7175, LOCAL: 1-601-649-0039
 FAX: 1-601-649-4320
 www.essmueller.com

Model "HR" High—Flight Round—Bottom Conveyor



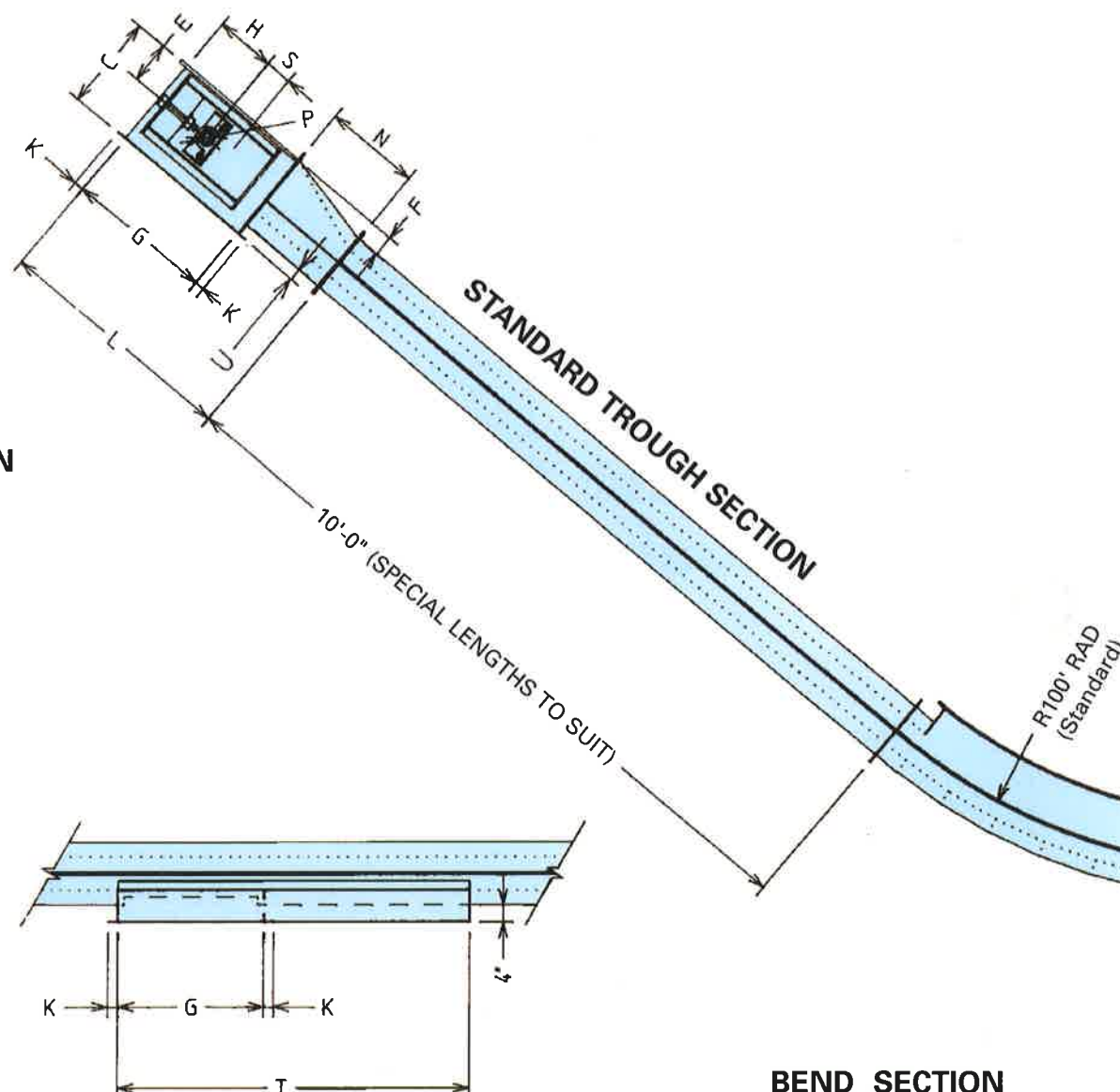
**Sizes to accommodate capacities
 up to 20,000 BPH**

another premium product of
 The ESSMUELLER Company

ESSMUELLER HIGH-FLITE ROUND BOTTOM CONVEYOR DIMENSIONS



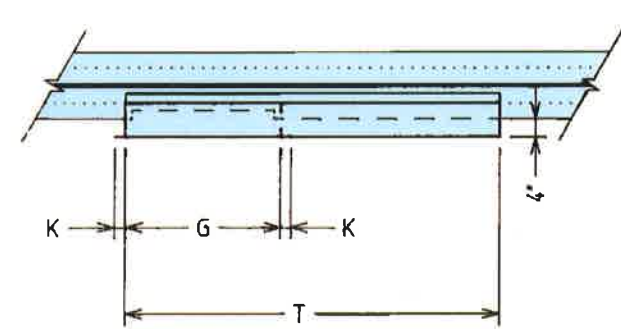
DESIGNED ESPECIALLY
FOR INCLINED APPLICATIONS



MODEL "HR" DIMENSIONAL DATA																		
SIZE	A	B	C	D	E	F	G	H	J	K	L	M	N	P	R	S	T	U
9	10	10	17	15	8	5	24	10	7 1/2	1 5/8	40	27 1/2	15 7/8	1 15/16	1 7/16	4 1/2	58	2
12	13	14 1/4	23 3/4	19 3/4	10 1/4	5 1/2	30	11	9 1/2	2 1/8	54	40 1/2	23 7/8	2 3/16	1 15/16	4 1/2	70	4
16	17	20 7/8	30 1/2	26 1/2	14	5 5/8	30	16	12 1/2	2 1/8	54	46 1/2	23 7/8	2 7/16	2 3/16	5 1/2	70	4

Note: Dimensions are subject to change without notice.

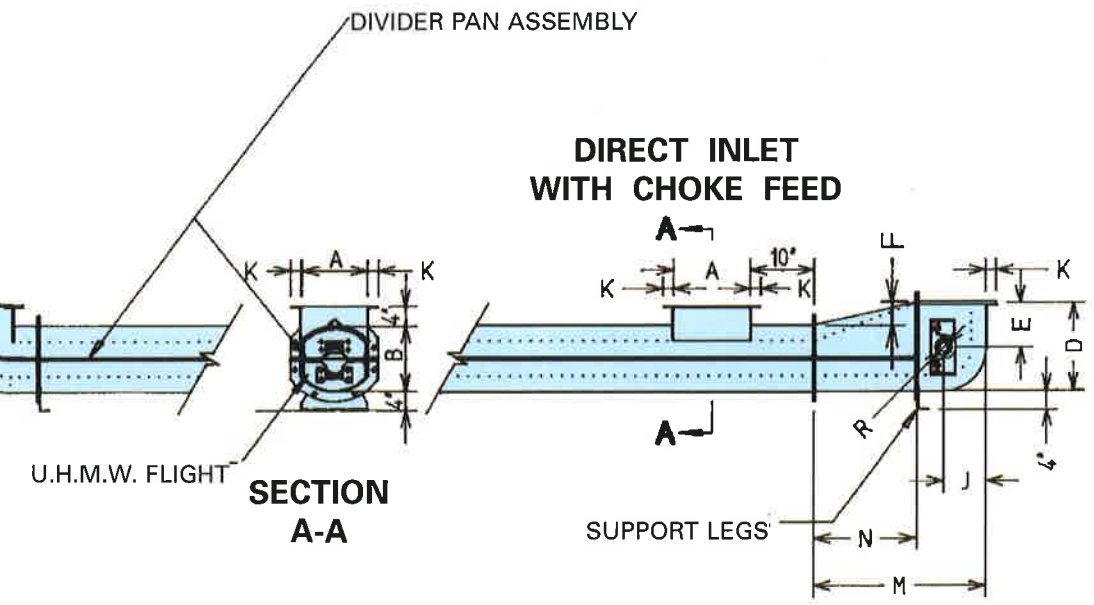
STANDARD HEAD
SECTION WITH
TRANSITION SECTION



INTERMEDIATE
CURVED SLIDE GATE

BEND SECTION
(90° MAX.)

AN INCLINE OVER 45° REQUIRES
A DESCENDING BEND SECTION.
*48" RAD. AVAILABLE FOR LIMITED
APPLICATIONS, CONSULT
ESSMUELLER.



STANDARD CONTOURED
TAIL SECTION WITH
TRANSITION SECTION

OPTIONS: HAND WHEEL, CHAIN WHEEL, PNEUMATIC OR ELECTRIC DRIVES (NOT SHOWN).